

The Tools panel illustrated

Selection (V) Selects, moves, and transforms entire objects

Magic Wand (Y) Selects objects based on their color and opacity attributes

Pen (P) Draws paths that are composed of curved and/or straight segments

Line Segment (\) Draws separate straight lines at any angle

Paintbrush (B) Creates Calligraphic, Scatter, Art, Bristle, or Pattern brush strokes

Blob Brush (Shift-B) Creates closed freehand shapes (or reshapes them)

Rotate (R) Rotates objects

Width (Shift-W) Reshapes an object's stroke

Shape Builder (Shift-M) Combines objects

Mesh (U) Creates and edits multicolored mesh objects

Eyedropper (I) Samples and applies paint or type attributes

Symbol Sprayer (Shift-S) Sprays symbol instances into a set

Artboard (Shift-O) Creates and document artboards

Hand (H) Moves the document in its window

Fill (press X to toggle or click to activate) The color, gradient, or pattern that fills the inside of a path

Default Fill and Stroke (D) Sets the fill color to white and the stroke to black 1 pt.

Gradient (>) Resets the fill or stroke to the last gradient

Color (<) Resets the fill or stroke to the last solid color

Gripper bar, for moving the panel

Direct Selection (A) Selects and reshapes objects by their anchor points and segments

Lasso (Q) Selects individual points and segments on a path by dragging around them

Type (T) Creates and edits horizontal type

Rectangle (M) Draws rectangles and squares

Pencil (N) Draws freehand paths

Eraser (Shift-E) Erases sections of objects

Scale (S) Enlarges and shrinks objects

Free Transform (E) Rotates, scales, reflects, shears, distorts, or applies perspective to objects

Perspective Grid (Shift-P) Puts objects into one-, two-, or three-point perspective

Gradient (G) Changes the position, length, radius, or angle of existing gradients

Blend (W) Creates shape and color blends between objects

Column Graph (J) Creates column graphs

Slice (Shift-K) Defines slice areas of a document

Zoom (Z) Changes the zoom level of a document

Swap Fill and Stroke (Shift-X) Swaps the current fill and stroke colors

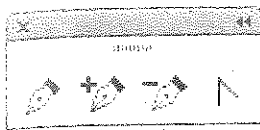
Stroke (press X to toggle or click to activate) The color or pattern that's applied to a path

None (J) Sets the current stroke or fill color to None

Drawing modes: Draw Normal, Draw Behind, or Draw Inside (Shift-D)

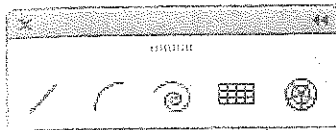
Screen modes (F) Change the size of the document window and control the display of Illustrator features

The tearoff toolbars*



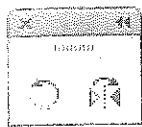
Convert Anchor Point (Shift-C) Converts corner points to smooth points, and vice versa

Add Anchor Point (+) **Delete Anchor Point (-)**



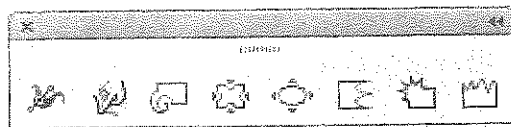
Polar Grid Creates circular grids

Arc Creates curve segments **Spiral** Creates spiral lines **Rectangular Grid** Creates rectangular grids

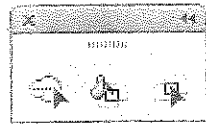


Reflect (O) Creates a mirror reflection of an object

LIQUIFY TOOLS (apply distortion)

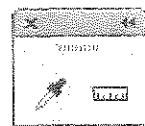


Warp (Shift-R) Distorts objects **Twirl** **Pucker** **Bloat** **Scallop** **Wrinkle** **Crystallize**



Live Paint Selection (Shift-L) Selects sections of a Live Paint group

Live Paint Bucket (K) Recolors faces and edges in a Live Paint group



Measure Measures the distance between two points

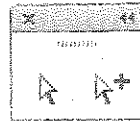
SYMBOLISM TOOLS (edit symbol instances)



Symbol Shifter **Symbol Scruncher** **Symbol Spinner** **Symbol Sizer** **Symbol Stainer** **Symbol Screener** **Symbol Styler**



Print Tiling Positions the printable page

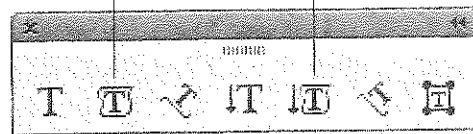


Group Selection Selects whole groups (and nested groups)

Area Type Creates and edits type horizontally inside an object

Vertical Area Type Creates and edits type vertically inside an object

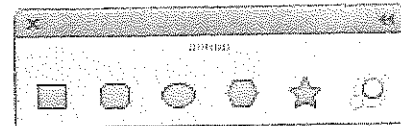
Touch Type (Shift-T) Scales, rotates, and shifts characters manually



Type on a Path Creates and edits type horizontally along a path

Vertical Type Creates and edits vertical type

Vertical Type on a Path Creates and edits type vertically along a path



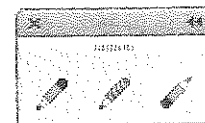
Rounded Rectangle

Ellipse (L)

Polygon

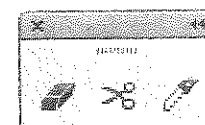
Star

Flare Creates drawings of lens flares



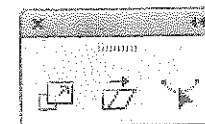
Path Eraser Erases sections of paths

Smooth Smooths path segments



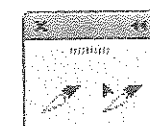
Knife Carves up paths

Scissors (C) Splits paths



Reshape Reshapes sections of paths

Shear Skews objects



Slice Selection Selects slices, for Web output

*The tearoff toolbars for the Perspective Grid and Graph tools aren't illustrated here.